

Numerical Analysis and Computing

Lecture Notes #07

— Numerical Differentiation and Integration — Differentiation; Richardson's Extrapolation; Integration

Joe Mahaffy,
(mahaffy@math.sdsu.edu)

Department of Mathematics
Dynamical Systems Group
Computational Sciences Research Center
San Diego State University
San Diego, CA 92182-7720

<http://www-rohan.sdsu.edu/~jmahaffy>

Spring 2010

SDSU

Joe Mahaffy, (mahaffy@math.sdsu.edu)

$\frac{\partial}{\partial x}$; Richardson's Extrapolation; $\int f(x) dx$ — (1/49)

Numerical Differentiation: The Big Picture

The goal of numerical differentiation is to compute an accurate approximation to the derivative(s) of a function.

Given measurements $\{f_i\}_{i=0}^n$ of the underlying function $f(x)$ at the node values $\{x_i\}_{i=0}^n$, our task is to estimate $f'(x)$ (and, later, higher derivatives) in the same nodes.

The strategy: Fit a polynomial to a cleverly selected subset of the nodes, and use the derivative of that polynomial as the approximation of the derivative.

SDSU

Joe Mahaffy, (mahaffy@math.sdsu.edu)

$\frac{\partial}{\partial x}$; Richardson's Extrapolation; $\int f(x) dx$ — (3/49)

Outline

- 1 **Numerical Differentiation**
 - Ideas and Fundamental Tools
 - Moving Along...
- 2 **Richardson's Extrapolation**
 - A Nice Piece of "Algebra Magic"
- 3 **Numerical Integration (Quadrature)**
 - The "Why?" and Introduction
 - Trapezoidal & Simpson's Rules
 - Newton-Cotes Formulas

SDSU

Joe Mahaffy, (mahaffy@math.sdsu.edu)

$\frac{\partial}{\partial x}$; Richardson's Extrapolation; $\int f(x) dx$ — (2/49)

Numerical Differentiation

Definition (Derivative as a limit)

The derivative of f at x_0 is

$$f'(x_0) = \lim_{h \rightarrow 0} \frac{f(x_0 + h) - f(x_0)}{h}.$$

The obvious approximation is to fix h "small" and compute

$$f'(x_0) \approx \frac{f(x_0 + h) - f(x_0)}{h}.$$

Problems: Cancellation and roundoff errors. — For small values of h , $f(x_0 + h) \approx f(x_0)$ so the difference may have very few *significant digits* in finite precision arithmetic.

⇒ **smaller h not necessarily better numerically.** SDSU

Joe Mahaffy, (mahaffy@math.sdsu.edu)

$\frac{\partial}{\partial x}$; Richardson's Extrapolation; $\int f(x) dx$ — (4/49)

Main Tools for Numerical Differentiation

1 of 2

In the discussion on Numerical Differentiation (and later Integration) we will rely on our old friend (nemesis?) — the Taylor expansions...

Theorem (Taylor's Theorem)

Suppose $f \in C^n[a, b]$, $f^{(n+1)} \exists$ on $[a, b]$, and $x_0 \in [a, b]$. Then $\forall x \in (a, b)$, $\exists \xi(x) \in (\min(x_0, x), \max(x_0, x))$ with $f(x) = P_n(x) + R_n(x)$ where

$$P_n(x) = \sum_{k=0}^n \frac{f^{(k)}(x_0)}{k!} (x - x_0)^k, \quad R_n(x) = \frac{f^{(n+1)}(\xi(x))}{(n+1)!} (x - x_0)^{(n+1)}.$$

$P_n(x)$ is the **Taylor polynomial of degree n** , and $R_n(x)$ is the **remainder term (truncation error)**.

SDSU

Getting an Error Estimate — Taylor Expansion

$$\begin{aligned} \frac{f(x_0 + h) - f(x_0)}{h} &= \frac{1}{h} \left[f(x_0) + hf'(x_0) + \frac{h^2}{2} f''(\xi(x)) - f(x_0) \right] \\ &= f'(x_0) + \frac{h}{2} f''(\xi(x)) \end{aligned}$$

If $f''(\xi(x))$ is bounded, i.e.

$$|f''(\xi(x))| < M, \quad \forall \xi(x) \in (x_0, x_0 + h)$$

then we have

$$f'(x_0) \approx \frac{f(x_0 + h) - f(x_0)}{h}, \quad \text{with an error less than } \frac{M|h|}{2}.$$

This is the **approximation error**.

(Roundoff error, $\sim \epsilon_{\text{mach}} \approx 10^{-16}$, not taken into account).

SDSU

Main Tools for Numerical Differentiation

2 of 2

Our second tool for building Differentiation and Integration schemes are the **Lagrange Coefficients**

$$L_{n,k}(x) = \prod_{j=0, j \neq k}^n \frac{x - x_j}{x_k - x_j}$$

Recall: $L_{n,k}(x)$ is the n th degree polynomial which is 1 in x_k and 0 in the other nodes ($x_j, j \neq k$).

Previously we have used the family $L_{n,0}(x), L_{n,1}(x), \dots, L_{n,n}(x)$ to build the **Lagrange interpolating polynomial**. — A good tool for discussing polynomial behavior, but not necessarily for computing polynomial values (c.f. Newton's divided differences).

Now, let's combine our tools and look at differentiation.

SDSU

Using Higher Degree Polynomials to get Better Accuracy

Suppose $\{x_0, x_1, \dots, x_n\}$ are distinct points in an interval \mathcal{I} , and $f \in C^{n+1}(\mathcal{I})$, we can write

$$f(x) = \underbrace{\sum_{k=0}^n f(x_k) L_{n,k}(x)}_{\text{Lagrange Interp. Poly.}} + \underbrace{\frac{\prod_{k=0}^n (x - x_k)}{(n+1)!} f^{(n+1)}(\xi(x))}_{\text{Error Term}}$$

Formal differentiation of this expression gives:

$$\begin{aligned} f'(x) &= \sum_{k=0}^n f(x_k) L'_{n,k}(x) + \frac{d}{dx} \left[\frac{\prod_{k=0}^n (x - x_k)}{(n+1)!} \right] f^{(n+1)}(\xi(x)) \\ &\quad + \frac{\prod_{k=0}^n (x - x_k)}{(n+1)!} \frac{d}{dx} [f^{(n+1)}(\xi(x))]. \end{aligned}$$

Note: When we evaluate $f'(x_j)$ at the node points (x_j) the last term gives no contribution. (\Rightarrow we don't have to worry about it...)

SDSU

Exercising the Product Rule for Differentiation

$$\frac{d}{dx} \left[\frac{\prod_{k=0}^n (x - x_k)}{(n+1)!} \right] =$$

$$\frac{1}{(n+1)!} [(x - x_1)(x - x_2) \cdots (x - x_n) + (x - x_0)(x - x_2) \cdots (x - x_n) + \cdots] =$$

$$\frac{1}{(n+1)!} \sum_{j=0}^n \left[\prod_{k=0, k \neq j}^n (x - x_k) \right]$$

Now, if we let $x = x_\ell$ for some particular value of ℓ , only the product which skips that value of $j = \ell$ is non-zero... e.g.

$$\left. \frac{1}{(n+1)!} \sum_{j=0}^n \left[\prod_{k=0, k \neq j}^n (x - x_k) \right] \right|_{x=x_\ell} = \frac{1}{(n+1)!} \prod_{k=0, k \neq \ell}^n (x_\ell - x_k)$$

SDSU

Example: 3-point Formulas, I/III

Building blocks:

$$L_{2,0}(x) = \frac{(x - x_1)(x - x_2)}{(x_0 - x_1)(x_0 - x_2)}, \quad L'_{2,0}(x) = \frac{2x - x_1 - x_2}{(x_0 - x_1)(x_0 - x_2)}$$

$$L_{2,1}(x) = \frac{(x - x_0)(x - x_2)}{(x_1 - x_0)(x_1 - x_2)}, \quad L'_{2,1}(x) = \frac{2x - x_0 - x_2}{(x_1 - x_0)(x_1 - x_2)}$$

$$L_{2,2}(x) = \frac{(x - x_0)(x - x_1)}{(x_2 - x_0)(x_2 - x_1)}, \quad L'_{2,2}(x) = \frac{2x - x_0 - x_1}{(x_2 - x_0)(x_2 - x_1)}.$$

Formulas:

$$f'(x_j) = f(x_0) \left[\frac{2x_j - x_1 - x_2}{(x_0 - x_1)(x_0 - x_2)} \right] + f(x_1) \left[\frac{2x_j - x_0 - x_2}{(x_1 - x_0)(x_1 - x_2)} \right]$$

$$+ f(x_2) \left[\frac{2x_j - x_0 - x_1}{(x_2 - x_0)(x_2 - x_1)} \right] + \frac{f^{(3)}(\xi_j)}{6} \prod_{k=0, k \neq j}^2 (x_j - x_k).$$

SDSU

The $(n+1)$ point formula for approximating $f'(x_j)$

Putting it all together yields what is known as the $(n+1)$ point formula for approximating $f'(x_j)$:

$$f'(x_j) = \sum_{k=0}^n f(x_k) L'_{n,k}(x_j) + \frac{f^{(n+1)}(\xi)}{(n+1)!} \left[\prod_{k=0, k \neq j}^n (x_j - x_k) \right]$$

Note: The formula is most useful when the node points are equally spaced (it can be computed once and stored), i.e.

$$x_k = x_0 + kh.$$

Now, we have to compute the derivatives of the Lagrange coefficients, i.e. $L_{n,k}(x)$... [We can no longer dodge this task!]

SDSU

Example: 3-point Formulas, II/III

When the points are equally spaced...

$$\begin{cases} f'(x_0) = \frac{1}{2h} [-3f(x_0) + 4f(x_1) - f(x_2)] + \frac{h^2}{3} f^{(3)}(\xi_0) \\ f'(x_1) = \frac{1}{2h} [-f(x_0) + f(x_2)] - \frac{h^2}{6} f^{(3)}(\xi_1) \\ f'(x_2) = \frac{1}{2h} [f(x_0) - 4f(x_1) + 3f(x_2)] + \frac{h^2}{3} f^{(3)}(\xi_2) \end{cases}$$

Use x_0 as the reference point — $x_k = x_0 + kh$:

$$\begin{cases} f'(x_0) = \frac{1}{2h} [-3f(x_0) + 4f(x_0 + h) - f(x_0 + 2h)] + \frac{h^2}{3} f^{(3)}(\xi_0) \\ f'(x_0 + h) = \frac{1}{2h} [-f(x_0) + f(x_0 + 2h)] - \frac{h^2}{6} f^{(3)}(\xi_1) \\ f'(x_0 + 2h) = \frac{1}{2h} [f(x_0) - 4f(x_0 + h) + 3f(x_0 + 2h)] + \frac{h^2}{3} f^{(3)}(\xi_2) \end{cases}$$

SDSU

Example: 3-point Formulas, III/III

$$\begin{cases} f'(x_0) = \frac{1}{2h} [-3f(x_0) + 4f(x_0 + h) - f(x_0 + 2h)] + \frac{h^2}{3} f^{(3)}(\xi_0) \\ f'(x_0^*) = \frac{1}{2h} [-f(x_0^* - h) + f(x_0^* + h)] - \frac{h^2}{6} f^{(3)}(\xi_1) \\ f'(x_0^+) = \frac{1}{2h} [f(x_0^+ - 2h) - 4f(x_0^+ - h) + 3f(x_0^+)] + \frac{h^2}{3} f^{(3)}(\xi_2) \end{cases}$$

After the substitution $x_0 + h \rightarrow x_0^*$ in the second equation, and $x_0 + 2h \rightarrow x_0^+$ in the third equation.

Note#1: The third equation can be obtained from the first one by setting $h \rightarrow -h$.

Note#2: The error is smallest in the second equation.

Note#3: The second equation is a two-sided approximation, the first and third one-sided approximations.

Note#4: We can drop the superscripts *, +, ...

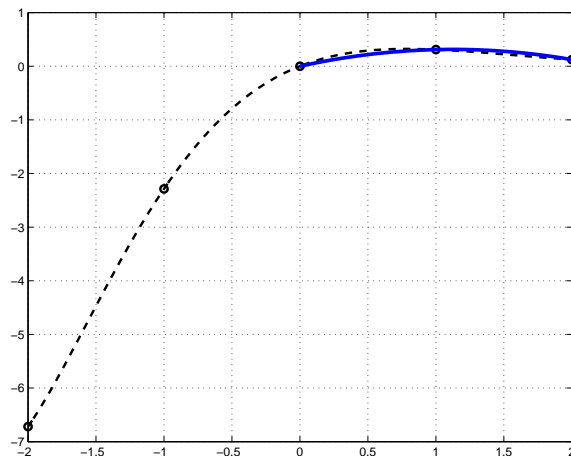
SDSU

Joe Mahaffy, (mahaffy@math.sdsu.edu)

$\frac{\partial}{\partial x}$; Richardson's Extrapolation; $\int f(x) dx$ — (13/49)

3-point Formulas: Illustration

Forward Formula



$$f'(x_0) = \frac{1}{2h} [-3f(x_0) + 4f(x_0 + h) - f(x_0 + 2h)] + \frac{h^2}{3} f^{(3)}(\xi_0)$$

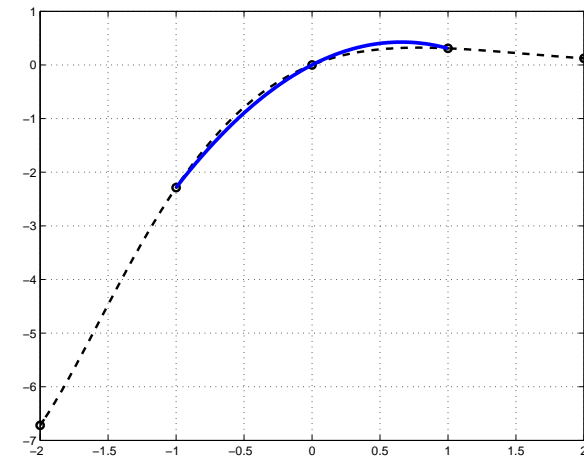
SDSU

Joe Mahaffy, (mahaffy@math.sdsu.edu)

$\frac{\partial}{\partial x}$; Richardson's Extrapolation; $\int f(x) dx$ — (15/49)

3-point Formulas: Illustration

Centered Formula



$$f'(x_0) = \frac{1}{2h} [-f(x_0 - h) + f(x_0 + h)] - \frac{h^2}{6} f^{(3)}(\xi_1)$$

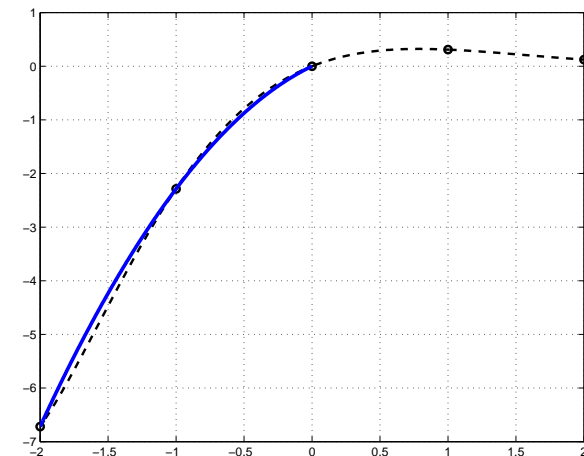
SDSU

Joe Mahaffy, (mahaffy@math.sdsu.edu)

$\frac{\partial}{\partial x}$; Richardson's Extrapolation; $\int f(x) dx$ — (14/49)

3-point Formulas: Illustration

Backward Formula



$$f'(x_0) = \frac{1}{2h} [f(x_0 - 2h) - 4f(x_0 - h) + 3f(x_0)] + \frac{h^2}{3} f^{(3)}(\xi_2)$$

SDSU

Joe Mahaffy, (mahaffy@math.sdsu.edu)

$\frac{\partial}{\partial x}$; Richardson's Extrapolation; $\int f(x) dx$ — (16/49)

5-point Formulas

If we want even better approximations we can go to 4-point, 5-point, 6-point, etc... formulas.

The most accurate (smallest error term) 5-point formula is:

$$f'(x_0) = \frac{f(x_0-2h) - 8f(x_0-h) + 8f(x_0+h) - f(x_0+2h)}{12h} + \frac{h^4}{30} f^{(5)}(\xi)$$

Sometimes (e.g for end-point approximations like the clamped splines), we need one-sided formulas

$$f'(x_0) = \frac{-25f(x_0) + 48f(x_0+h) - 36f(x_0+2h) + 16f(x_0+3h) - 3f(x_0+4h)}{12h} + \frac{h^4}{5} f^{(5)}(\xi).$$

SDSU

Higher Order Derivatives

We can derive approximations for higher order derivatives in the same way. — Fit a k th degree polynomial to a cluster of points $\{x_i, f(x_i)\}_{i=n}^{n+k+1}$, and compute the appropriate derivative of the polynomial in the point of interest.

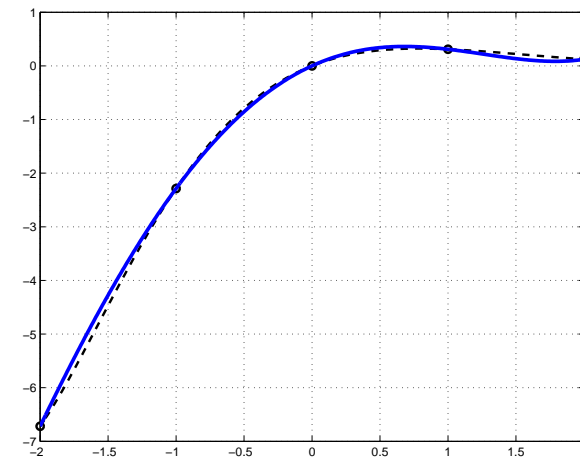
The standard centered approximation of the second derivative is given by

$$f''(x_0) = \frac{f(x_0+h) - 2f(x_0) + f(x_0-h))}{h^2} + \mathcal{O}(h^2)$$

SDSU

5-point Formulas: Illustration

Centered Formula



$$f'(x_0) = \frac{f(x_0-2h) - 8f(x_0-h) + 8f(x_0+h) - f(x_0+2h)}{12h} + \frac{h^4}{30} f^{(5)}(\xi)$$

SDSU

Wrapping Up Numerical Differentiation

We now have the tools to build high-order accurate approximations to the derivative.

We will use these tools and similar techniques in building integration schemes in the following lectures.

Also, these approximations are the backbone of finite difference methods for numerical solution of differential equations (see Math 542, and Math 693b).

Next, we develop a general tool for combining low-order accurate approximations (to derivatives, integrals, anything! (almost))... in order to hierarchically constructing higher order approximations.

SDSU

Richardson's Extrapolation

What it is: A general method for generating high-accuracy results using low-order formulas.

Applicable when: The approximation technique has an error term of predictable form, e.g.

$$M - N_j(h) = \sum_{k=j}^{\infty} E_k h^k,$$

where M is the unknown value we are trying to approximate, and $N_j(h)$ the approximation (which has an error $\mathcal{O}(h^j)$).

Procedure: Use two approximations of the same order, but with *different* h ; e.g. $N_j(h)$ and $N_j(h/2)$. Combine the two approximations in such a way that the error terms of order h^j cancel.

SDSU

Building High Accuracy Approximations

II/V

We can play the game again, and combine $N_2(h)$ with $N_2(h/2)$ to get a third-order accurate approximation, etc.

$$N_3(h) = \frac{4N_2(h/2) - N_2(h)}{3} = N_2(h/2) + \frac{N_2(h/2) - N_2(h)}{3}$$

$$N_4(h) = N_3(h/2) + \frac{N_3(h/2) - N_3(h)}{7}$$

$$N_5(h) = N_4(h/2) + \frac{N_4(h/2) - N_4(h)}{2^4 - 1}$$

In general, combining two j th order approximations to get a $(j+1)$ st order approximation:

$$N_{j+1}(h) = N_j(h/2) + \frac{N_j(h/2) - N_j(h)}{2^j - 1}$$

SDSU

Building High Accuracy Approximations

I/V

Consider two first order approximations to M :

$$M - N_1(h) = \sum_{k=1}^{\infty} E_k h^k,$$

and

$$M - N_1(h/2) = \sum_{k=1}^{\infty} E_k \frac{h^k}{2^k}.$$

If we let $N_2(h) = 2N_1(h/2) - N_1(h)$, then

$$M - N_2(h) = \underbrace{2E_1 \frac{h}{2} - E_1 h}_0 + \sum_{k=2}^n E_k^{(2)} h^k,$$

where

$$E_k^{(2)} = E_k \left(\frac{1}{2^{k-1}} - 1 \right).$$

Hence, $N_2(h)$ is now a **second order approximation** to M .

SDSU

Building High Accuracy Approximations

III/V

Let's derive the general update formula. Given,

$$M - N_j(h) = E_j h^j + \mathcal{O}(h^{j+1})$$

$$M - N_j(h/2) = E_j \frac{h^j}{2^j} + \mathcal{O}(h^{j+1})$$

We let

$$N_{j+1}(h) = \alpha_j N_j(h) + \beta_j N_j(h/2)$$

However, if we want $N_{j+1}(h)$ to approximate M , we must have $\alpha_j + \beta_j = 1$. Therefore

$$M - N_{j+1}(h) = \alpha_j E_j h^j + (1 - \alpha_j) E_j \frac{h^j}{2^j} + \mathcal{O}(h^{j+1})$$

SDSU

Building High Accuracy Approximations

IV/V

Now,

$$M - N_{j+1}(h) = E_j h^j \left[\alpha_j + (1 - \alpha_j) \frac{1}{2^j} \right] + \mathcal{O}(h^{j+1})$$

 We want to select α_j so that the expression in the bracket is zero.

This gives

$$\alpha_j = \frac{-1}{2^j - 1}, \quad 1 - \alpha_j = \frac{2^j}{2^j - 1} = \frac{(2^j - 1) + 1}{2^j - 1} = 1 + \frac{1}{2^j - 1}$$

Therefore,

$$N_{j+1}(h) = N_j(h/2) + \frac{N_j(h/2) - N_j(h)}{2^j - 1}$$

SDSU

Example (c.f. slide#13, and slide#17)

 The centered difference formula approximating $f'(x_0)$ can be expressed:

$$f'(x_0) = \underbrace{\frac{f(x+h) - f(x-h)}{2h}}_{N_2(h)} - \underbrace{\frac{h^2}{6} f'''(\xi)}_{\text{error term}} + \mathcal{O}(h^4)$$

 In order to eliminate the h^2 part of the error, we let our new approximation be

$$N_3(h) = N_2(h/2) + \frac{N_2(h/2) - N_2(h)}{3}$$

$$\begin{aligned} N_3(2h) &= \frac{f(x+h) - f(x-h)}{2h} + \frac{\frac{f(x+h) - f(x-h)}{2h} - \frac{f(x+2h) - f(x-2h)}{4h}}{3} \\ &= \frac{8f(x+h) - 8f(x-h)}{6h} - \frac{f(x+2h) - f(x-2h)}{6h} \\ &= \frac{1}{12h} [f(x-2h) - 8f(x-h) + 8f(x+h) - f(x+2h)]. \end{aligned}$$

SDSU

Building High Accuracy Approximations

V/V

The following table illustrates how we can use Richardson's extrapolation to build a 5th order approximation, using five 1st order approximations:

$\mathcal{O}(h)$	$\mathcal{O}(h^2)$	$\mathcal{O}(h^3)$	$\mathcal{O}(h^4)$	$\mathcal{O}(h^5)$
$N_1(h)$				
$N_1(h/2)$	$N_2(h)$			
$N_1(h/4)$	$N_2(h/2)$	$N_3(h)$		
$N_1(h/8)$	$N_2(h/4)$	$N_3(h/2)$	$N_4(h)$	
$N_1(h/16)$	$N_2(h/8)$	$N_3(h/4)$	$N_4(h/2)$	$N_5(h)$
↑ Measurements	↑	Extrapolations		↑

SDSU

 Example, $f(x) = x^2 e^x$.

$$\begin{aligned} f'(x) &= (2x + x^2)e^x, \\ f'(2) &= 8e^2 = 59.112. \end{aligned}$$

x	f(x)
1.70	15.8197
1.80	19.6009
1.90	24.1361
2.00	29.5562
2.10	36.0128
2.20	43.6811
2.30	52.7634

$$\frac{f(2.1) - f(2.0)}{0.1} = 64.566. \quad (\text{Fwd Difference, 2pt})$$

$$\frac{f(2.1) - f(1.9)}{0.2} = 59.384. \quad (\text{Ctr Difference, 3pt})$$

$$\frac{f(2.2) - f(1.8)}{0.4} = 60.201. \quad (\text{Ctr Difference})$$

$$(4 * 59.384 - 60.201) / 3 = 59.111. \quad (\text{Richardson})$$

$$\frac{f(1.8) - 8f(1.9) + 8f(2.1) - f(2.2)}{1.2} = 59.111. \quad (5\text{pt})$$

SDSU

Integration: Introduction — The "Why?"

After taking calculus, I thought I could differentiate and/or integrate every function...

Then came physics, mechanical engineering, etc...

The need for numerical integration was painfully obvious!

Sometimes (most of the time?), the anti-derivative is not available in closed form.

$$\int f(x) dx = \underbrace{F(x)}_{\text{Anti-Derivative}} + C$$



Building Integration Schemes with Lagrange Polynomials

Given the nodes $\{x_0, x_1, \dots, x_n\}$ we can use the **Lagrange interpolating polynomial**

$$P_n(x) = \sum_{i=0}^n f_i L_{n,i}(x), \quad \text{with error} \quad E_n(x) = \frac{f^{(n+1)}(\xi(x))}{(n+1)!} \prod_{i=0}^n (x - x_i)$$

to obtain

$$\int_a^b f(x) dx = \underbrace{\int_a^b P_n(x) dx}_{\text{The Approximation}} + \underbrace{\int_a^b E_n(x) dx}_{\text{The Error Estimate}}$$



Numerical Quadrature

The basic idea is to replace integration by clever summation:

$$\int_a^b f(x) dx \rightarrow \sum_{i=0}^n a_i f_i,$$

where $a \leq x_0 < x_1 < \dots < x_n \leq b$, $f_i = f(x_i)$.

The coefficients a_i and the nodes x_i are to be selected.



Identifying the Coefficients

$$\int_a^b P_n(x) dx = \int_a^b \sum_{i=0}^n f_i L_{n,i}(x) dx = \sum_{i=0}^n f_i \underbrace{\int_a^b L_{n,i}(x) dx}_{a_i} = \sum_{i=0}^n f_i a_i.$$

Hence we write

$$\int_a^b f(x) dx \approx \sum_{i=0}^n a_i f_i$$

with error given by

$$E(f) = \int_a^b E_n(x) dx = \int_a^b \frac{f^{(n+1)}(\xi(x))}{(n+1)!} \prod_{i=0}^n (x - x_i) dx.$$

Note: Can we change the order of integration \int and summation \sum as we did above? In this case where we are integrating a polynomial over a finite interval it is OK. For technical details see a class on real analysis (e.g. Math 534B).

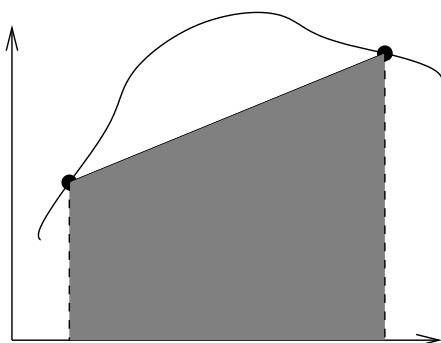


Example #1: Trapezoidal Rule

I/III

Let $a = x_0 < x_1 = b$, and use the linear interpolating polynomial

$$P_1(x) = f_0 \left[\frac{x - x_1}{x_0 - x_1} \right] + f_1 \left[\frac{x - x_0}{x_1 - x_0} \right].$$



SDSU

Example #1: Trapezoidal Rule

III/III

Hence,

$$\begin{aligned} \int_a^b f(x) dx &= \left[f_0 \left[\frac{(x - x_1)^2}{2(x_0 - x_1)} \right] + f_1 \left[\frac{(x - x_0)^2}{2(x_1 - x_0)} \right] \right]_{x_0}^{x_1} - \frac{h^3}{12} f''(\xi) \\ &= \frac{(x_1 - x_0)}{2} [f_0 + f_1] - \frac{h^3}{12} f''(\xi) \end{aligned}$$

$$\int_a^b f(x) dx = h \left[\frac{f(x_0) + f(x_1)}{2} \right] - \frac{h^3}{12} f''(\xi), \quad h = b - a.$$

SDSU

Example #1: Trapezoidal Rule

II/III

Then

$$\begin{aligned} \int_a^b f(x) dx &= \int_{x_0}^{x_1} \left[f_0 \left[\frac{x - x_1}{x_0 - x_1} \right] + f_1 \left[\frac{x - x_0}{x_1 - x_0} \right] \right] dx \\ &\quad + \frac{1}{2} \int_{x_0}^{x_1} f''(\xi(x))(x - x_0)(x - x_1) dx. \end{aligned}$$

The error term (use the Weighted Mean Value Theorem):

$$\begin{aligned} \int_{x_0}^{x_1} f''(\xi(x))(x - x_0)(x - x_1) dx &= f''(\xi) \int_{x_0}^{x_1} (x - x_0)(x - x_1) dx \\ &= f''(\xi) \left[\frac{x^3}{3} - \frac{x_1 + x_0}{2} x^2 + x_0 x_1 x \right]_{x_0}^{x_1} = -\frac{h^3}{6} f''(\xi). \end{aligned}$$

where $h = x_1 - x_0 = b - a$.

SDSU

Example #2a: Simpson's Rule (sub-optimal error bound)

Let $x_0 = a$, $x_1 = \frac{a+b}{2}$, $x_2 = b$, let $h = \frac{b-a}{2}$ and use the **quadratic interpolating polynomial**

$$\begin{aligned} \int_a^b f(x) dx &= \int_{x_0}^{x_2} \left[f(x_0) \frac{(x - x_1)(x - x_2)}{(x_0 - x_1)(x_0 - x_2)} + f(x_1) \frac{(x - x_0)(x - x_2)}{(x_1 - x_0)(x_1 - x_2)} \right. \\ &\quad \left. + f(x_2) \frac{(x - x_0)(x - x_1)}{(x_2 - x_0)(x_2 - x_1)} \right] dx \\ &\quad + \int_{x_0}^{x_2} \frac{(x - x_0)(x - x_1)(x - x_2)}{6} f^{(3)}(\xi(x)) dx \dots \end{aligned}$$

$$\int_a^b f(x) dx = h \left[\frac{f(x_0) + 4f(x_1) + f(x_2)}{3} \right] + \mathcal{O}(h^4 f^{(3)}(\xi)).$$

SDSU

Example #2b: Simpson's Rule (optimal error bound)

The optimal error bound for Simpson's rule can be obtained by Taylor expanding $f(x)$ about the mid-point x_1 :

$$f(x) = f(x_1) + f'(x_1)(x - x_1) + \frac{f''(x_1)}{2}(x - x_1)^2 + \frac{f'''(x_1)}{6}(x - x_1)^3 + \frac{f^{(4)}(\xi(x))}{24}(x - x_1)^4$$

Then formally integrating this expression

$$\int_a^b \left[f(x_1) + f'(x_1)(x - x_1) + \frac{f''(x_1)}{2}(x - x_1)^2 + \frac{f'''(x_1)}{6}(x - x_1)^3 + \frac{f^{(4)}(\xi(x))}{24}(x - x_1)^4 \right] dx$$

After use of the weighted mean value theorem, and the approximation $f''(x_1) = \frac{1}{h^2}[f(x_0) - 2f(x_1) + f(x_2)] - \frac{h^2}{12}f^{(4)}(\xi)$, and a whole lot of algebra (see BF pp 189–190) we end up with

$$\int_{x_0}^{x_2} f(x) dx = h \left[\frac{f(x_0) + 4f(x_1) + f(x_2)}{3} \right] - \frac{h^5}{90} f^{(4)}(\xi).$$

SDSU

Integration Examples

$f(x)$	$[a, b]$	$\int_a^b f(x) dx$	Trapezoidal	Error	Simpson	Error
x	$[0, 1]$	$1/2$	0.5	0	0.5	0
x^2	$[0, 1]$	$1/3$	0.5	0.16667	0.33333	0
x^3	$[0, 1]$	$1/4$	0.5	0.25000	0.25000	0
x^4	$[0, 1]$	$1/5$	0.5	0.30000	0.20833	0.0083333
e^x	$[0, 1]$	$e - 1$	1.8591	0.14086	1.7189	0.0005793

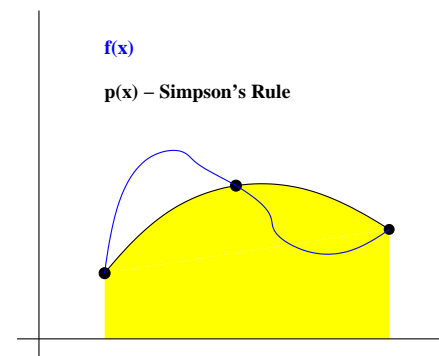
The Trapezoidal rule gives exact solutions for linear functions. — The error terms contains a second derivative.

Simpson's rule gives exact solutions for polynomials of degree less than 4. — The error term contains a fourth derivative.

SDSU

Example #2: Simpson's Rule

$$\int_a^b f(x) dx = h \left[\frac{f(x_0) + 4f(x_1) + f(x_2)}{3} \right] + \mathcal{O}(h^5 f^{(4)}(\xi)).$$



SDSU

Degree of Accuracy (Precision)

Definition (Degree of Accuracy)

The **Degree of Accuracy**, or **precision**, of a quadrature formula is the largest positive integer n such that the formula is exact for x^k $\forall k = 0, 1, \dots, n$.

With this definition:

Scheme	Degree of Accuracy
Trapezoidal	1
Simpson's	3

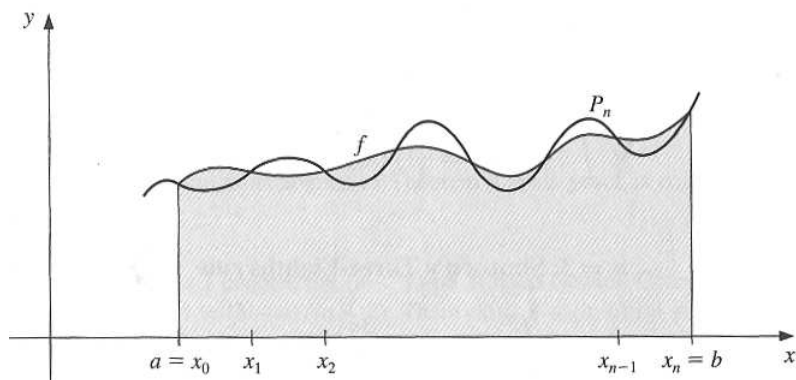
Trapezoidal and Simpson's are examples of a class of methods known as **Newton-Cotes formulas**.

SDSU

Newton-Cotes Formulas — Two Types

Closed

Closed The $(n + 1)$ point closed NCF uses nodes $x_i = x_0 + ih$, $i = 0, 1, \dots, n$, where $x_0 = a$, $x_n = b$ and $h = (b - a)/n$. It is called closed since the endpoints are included as nodes.



SDSU

Joe Mahaffy, <mahaffy@math.sdsu.edu>

$\frac{\partial}{\partial x}$; Richardson's Extrapolation; $\int f(x) dx$ — (41/49)

Closed Newton-Cotes Formulas

The approximation is

$$\int_a^b f(x) dx \approx \sum_{i=0}^n a_i f(x_i),$$

where

$$a_i = \int_{x_0}^{x_n} L_{n,i}(x) dx = \int_{x_0}^{x_n} \prod_{\substack{j=0 \\ j \neq i}}^n \frac{(x - x_j)}{(x_i - x_j)} dx.$$

Note: The Lagrange polynomial $L_{n,i}(x)$ models a function which takes the value 0 at all x_j ($j \neq i$), and 1 at x_i . Hence, the coefficient a_i captures the integral of a function which is 1 in x_i and zero in the other node points.

SDSU

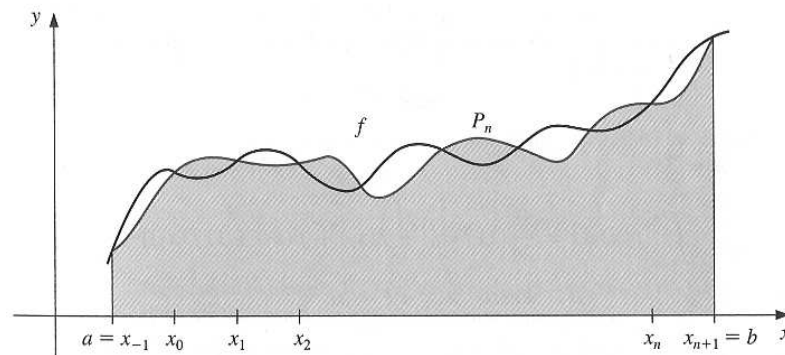
Joe Mahaffy, <mahaffy@math.sdsu.edu>

$\frac{\partial}{\partial x}$; Richardson's Extrapolation; $\int f(x) dx$ — (43/49)

Newton-Cotes Formulas — Two Types

Open

Open The $(n + 1)$ point open NCF uses nodes $x_i = x_0 + ih$, $i = 0, 1, \dots, n$ where $h = (b - a)/(n + 2)$ and $x_0 = a + h$, $x_n = b - h$. (We label $x_{-1} = a$, $x_{n+1} = b$.)



SDSU

Joe Mahaffy, <mahaffy@math.sdsu.edu>

$\frac{\partial}{\partial x}$; Richardson's Extrapolation; $\int f(x) dx$ — (42/49)

Closed Newton-Cotes Formulas — Error

Theorem

Suppose that $\sum_{i=0}^n a_i f(x_i)$ denotes the $(n + 1)$ point closed Newton-Cotes formula with $x_0 = a$, $x_n = b$, and $h = (b - a)/n$. Then there exists $\xi \in (a, b)$ for which

$$\int_a^b f(x) dx = \sum_{i=0}^n a_i f(x_i) + \frac{h^{n+3} f^{(n+2)}(\xi)}{(n+2)!} \int_0^n t^2(t-1) \cdots (t-n) dt,$$

if n is even and $f \in C^{n+2}[a, b]$, and

$$\int_a^b f(x) dx = \sum_{i=0}^n a_i f(x_i) + \frac{h^{n+2} f^{(n+1)}(\xi)}{(n+1)!} \int_0^n t(t-1) \cdots (t-n) dt,$$

if n is odd and $f \in C^{n+1}[a, b]$.

Note that when n is an even integer, the degree of precision is $(n + 1)$. When n is odd, the degree of precision is only n .

SDSU

Joe Mahaffy, <mahaffy@math.sdsu.edu>

$\frac{\partial}{\partial x}$; Richardson's Extrapolation; $\int f(x) dx$ — (44/49)

Closed Newton-Cotes Formulas — Examples

$n = 2$: Simpson's Rule

$$\frac{h}{3} \left[f(x_0) + 4f(x_1) + f(x_2) \right] - \frac{h^5}{90} f^{(4)}(\xi)$$

$n = 3$: Simpson's $\frac{3}{8}$ -Rule

$$\frac{3h}{8} \left[f(x_0) + 3f(x_1) + 3f(x_2) + f(x_3) \right] - \frac{3h^5}{80} f^{(4)}(\xi)$$

$n = 4$: Boole's Rule

$$\frac{2h}{45} \left[7f(x_0) + 32f(x_1) + 12f(x_2) + 32f(x_3) + 7f(x_4) \right] - \frac{8h^7}{945} f^{(6)}(\xi)$$



Open Newton-Cotes Formulas — Error

Theorem

Suppose that $\sum_{i=0}^n a_i f(x_i)$ denotes the $(n+1)$ point open Newton-Cotes formula with $x_{-1} = a$, $x_{n+1} = b$, and $h = (b-a)/(n+2)$. Then there exists $\xi \in (a, b)$ for which

$$\int_a^b f(x) dx = \sum_{i=0}^n a_i f(x_i) + \frac{h^{n+3} f^{(n+2)}(\xi)}{(n+2)!} \int_{-1}^{n+1} t^2(t-1) \cdots (t-n) dt,$$

if n is even and $f \in C^{n+2}[a, b]$, and

$$\int_a^b f(x) dx = \sum_{i=0}^n a_i f(x_i) + \frac{h^{n+2} f^{(n+1)}(\xi)}{(n+1)!} \int_{-1}^{n+1} t(t-1) \cdots (t-n) dt,$$

if n is odd and $f \in C^{n+1}[a, b]$.

Note that when n is an even integer, the degree of precision is $(n+1)$. When n is odd, the degree of precision is only n .



Open Newton-Cotes Formulas

The approximation is

$$\int_a^b f(x) dx = \int_{x_{-1}}^{x_{n+1}} f(x) dx \approx \sum_{i=0}^n a_i f(x_i),$$

where

$$a_i = \int_{x_{-1}}^{x_{n+1}} L_{n,i}(x) dx = \int_{x_0}^{x_n} \prod_{\substack{j=0 \\ j \neq i}}^n \frac{(x - x_j)}{(x_i - x_j)} dx.$$



Open Newton-Cotes Formulas — Examples

$$n = 0 : \quad 2hf(x_0) + \frac{h^3}{3} f''(\xi)$$

$$n = 1 : \quad \frac{3h}{2} \left[f(x_0) + f(x_1) \right] + \frac{3h^3}{4} f''(\xi)$$

$$n = 2 : \quad \frac{4h}{3} \left[2f(x_0) - f(x_1) + 2f(x_2) \right] + \frac{14h^5}{45} f^{(4)}(\xi)$$

$$n = 3 : \quad \frac{5h}{24} \left[11f(x_0) + f(x_1) + f(x_2) + 11f(x_3) \right] + \frac{95h^5}{144} f^{(4)}(\xi)$$



Divide and Conquer!

Say you want to compute:

$$\int_0^{100} f(x) dx.$$

Is it a Good Idea™ to directly apply your favorite Newton-Cotes formula to this integral?!?

No!

With the closed 5-point NCF, we have $h = 25$ and $h^5/90 \sim 10^5$ so even with a bound on $f^{(6)}(\xi)$ the error will be large.

Better: Apply the closed 5-point NCF to the integrals

$$\int_{4i}^{4(i+1)} f(x) dx, \quad i = 0, 1, \dots, 24$$

then sum. **"Composite Numerical Integration."** (next time) 